

SPRING CROCUS AFGHAN SQUARE

Connie Iversen

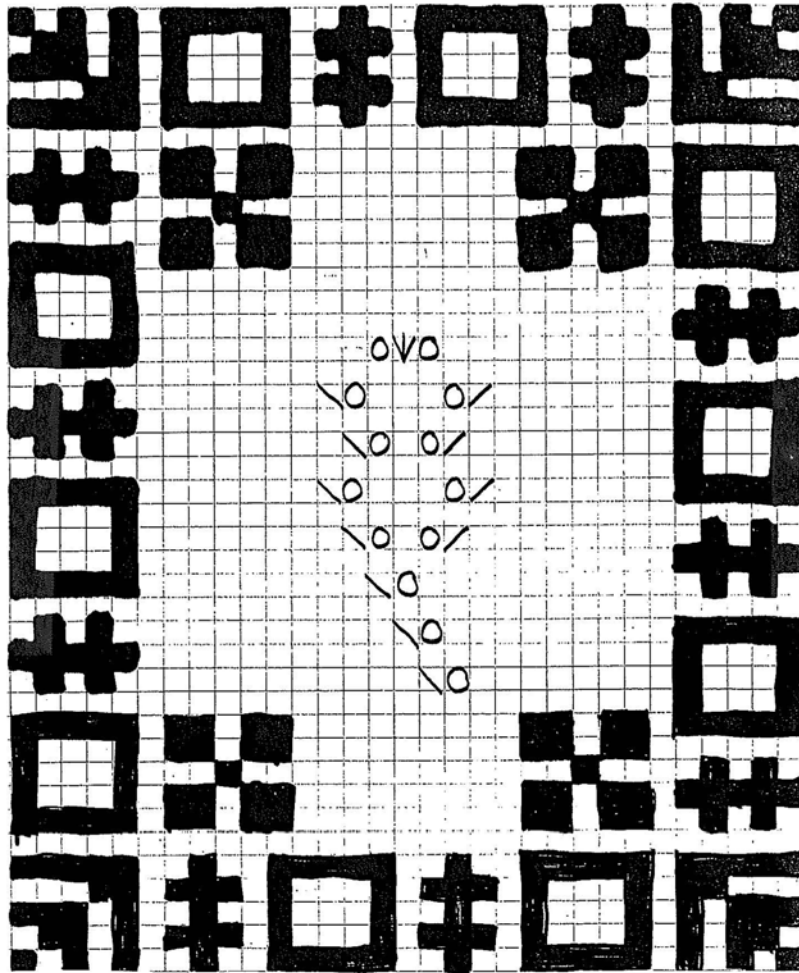
Gauge: 33 stitches x 40 rows = 8 inches

Yarn: 4 ply worsted weight

Needles: Size 8 (or size required to reach gauge)



Cast on 33 stitches. Follow graph for pattern for 40 rows. Bind off.



- = Knit on right side, purl on wrong side
- = Purl on right side, knit on right side
- = Yarnover
- \ = S1, K1, pss0
- / = K2 together
- ψ = S1, K2tog, pss0